

1000183745	3.5
0309	

Track Excavator

50Z3, 6003



OPERATOR'S MANUAL





1 Introduction

1.1 Important operator information

Store the Operator's Manual in the storage box at the rear of the seat.

This Operator's Manual contains important information on how to work safely, correctly and economically with the machine. It provides information and instructions for all operators regardless of the experience level. It helps to avoid dangerous situations and reduce repair costs and downtimes. Furthermore, the reliability and the service life of the machine will be increased by following the instructions in the Operator's Manual. This is why **the Operator's Manual must always be kept at hand in the machine.**

Your own safety, as well as the safety of others, depends to a great extent on how the machine is moved and operated. Thoroughly read and understand the information in this Operator's Manual before operating the machine for the first time. This Operator's Manual will help to familiarize yourself more easily with the machine, thereby enabling you to use it more safely and efficiently.

Before operating the machine for the first time, carefully read the section „Safety Instructions“ to learn how to operate the machine safely. As a rule, keep the following in mind:

Careful and prudent working is the best way to avoid accidents!

Special Instructions

- Instructions are provided for bucket attachments. No instructions are provided for other attachments. Refer to the specific attachment operator's manual for safe operation.
- Wacker Neuson reserves the right to make product improvement changes during the course of series production of this machine.
- Modifying the manufacturer specification and configuration of this machine, or using unapproved attachments, can cause personal hazards and damage the machine. Contact your Wacker Neuson dealer for additional information and clarification regarding modifications.

Operational safety and readiness of the machine do not only depend on your skill, but also on maintenance and servicing of the machine. This is why regular maintenance and service work is absolutely necessary. Extensive maintenance and repair work must always be performed by an expert with appropriate training. Insist on using original spare parts when performing maintenance and repair work. This ensures operational safety and readiness of your machine, and maintains its value.

- Special equipment and superstructures are not described in this Operator's Manual.
- We reserve the right to modify and improve the machine as required by technical progress
- Modifying Wacker Neuson products and fitting them with additional equipment and tools not included in our delivery program requires Wacker Neuson's written authorisation, otherwise warranty and product liability for possible damage caused by these modifications shall not be applicable.

Your Wacker Neuson dealer will be pleased to answer any further questions regarding the machine or the Operator's Manual.

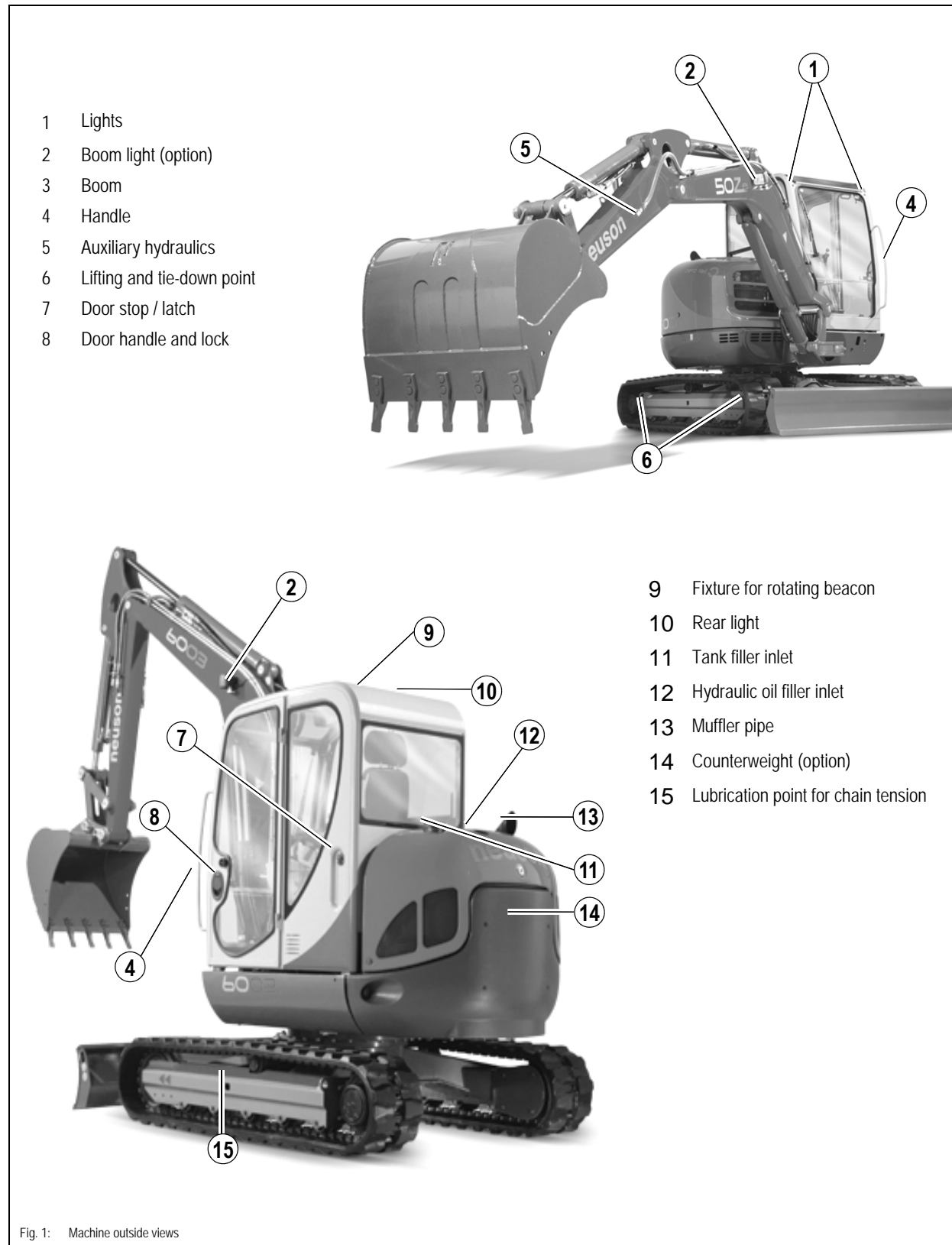
Abbreviations / symbols

- This symbol stands for a list
 - Subdivision within lists or an activity. Follow the steps in the recommended sequence
- ☞ *This symbol requires you to perform the activity described*
- ➡ Description of the effects or results of an activity
- n. s. = not shown
- “Opt” = option Stated whenever controls or other components of the machine are installed as an option.



This symbol shows the driving direction – for better orientation in figures and graphics.

1.2 Machine overview





1.3 Brief Description

The model 50Z3 and 6003 excavators are self-propelled work machines.

Get informed on and follow the legal regulations of your country.

This machine is a versatile and powerful tool for moving earth, gravel and debris on construction sites and elsewhere. A wide range of attachments accounts for the numerous applications of the machine, among others hammer and grab applications. See chapter [Fields of application, attachments](#) for further applications.

The main components of the machine are:

50Z3

- FOPS (Falling Object Protective Structure), TOPS (Tip Over Protective Structure) and ROPS (Roll Over Protective Structure) tested closed cab (standard).
- FOPS (Falling Object Protective Structure), TOPS (Tip Over Protective Structure) and ROPS (Roll Over Protective Structure) tested open cab (option).

6003

- FOPS (Falling Object Protective Structure), TOPS (Tip Over Protective Structure) and ROPS (Roll Over Protective Structure) tested closed cab (standard).
- Models 50Z3 and 6003: water-cooled Yanmar four cylinder diesel engine
- Sturdy steel sheet chassis; rubber-mounted engine

Travelling drive

The diesel engine permanently drives the twin axial variable displacement pump whose oil flow is sent to a hydraulic motor for each track drive.

Work hydraulics

The diesel engine also drives the joint gear pump for the work hydraulics. The oil flow of this pump depends on the diesel engine speed only.

Cooling system

The indicator lights in the instrument panel of the machine ensure constant monitoring of the engine and hydraulic oil temperature, as well as of the coolant temperature and level.

Cab

Do not modify or attempt to repair the ROPS cab or ROPS structure. A bent or damaged ROPS will no longer protect the operator in the event of a tipping incident and must be replaced. Contact your Wacker Neuson dealer for instructions or clarification.

The ROPS is a special safety device designed and produced to exacting material and assembly standards for certification. Bending, heating, welding, cutting, or drilling holes in the ROPS will reduce the protection performance in a tipping incident.

Fasten your seatbelt, otherwise you can be thrown around or even outside the cab and crushed. Therefore always fasten your seatbelt as you drive and work with the machine. Tighten the seatbelt before taking up work with the machine.



1.4 Fields of application, attachments

The attachments installed determine the intended use of this machine.

NOTICE

In order to avoid damage to the machine, only the attachments listed below have been certified for installation on the machine.

- Contact your Wacker Neuson dealer if you wish to use other attachments.

Using tools of other manufacturers, or tools which have been released for other excavator types, can reduce the machine's output and stability considerably, and can also cause damage to the machine and injuries to the operator or the staff.

Always compare the weight of the tool and its maximum payload with the indications in the lift capacity table. Never exceed the maximum payload stated in the lift capacity table.

Possible attachments

The measurements are Metric (Imperial).

Description of attachment	Capacity	Item no.:	Excavator	Remarks
Complete quickhitch		1000112204	50Z3	Required for operation of the Wacker Neuson quickhitch system
			6003	
Bucket B = 340 mm (1'1")	58 l (2 ft ³)	1000112213	50Z3	
	58 l (2 ft ³)	1000112220	50Z3	For quickhitch
Bucket B = 400 mm (1'4")	74 l (2.6 ft ³)	1000112216	50Z3	
	74 l (2.6 ft ³)	1000112221	50Z3	For quickhitch
Bucket B = 500 mm (1'8")	95 l (3.4 ft ³)	1000108126	50Z3	
	95 l (3.4 ft ³)	1000112222	50Z3	For quickhitch
Bucket B = 650 mm (2'2")	130 l (4.6 ft ³)	1000112218	50Z3	
	130 l (4.6 ft ³)	1000112223	50Z3	For quickhitch
Bucket B = 850 mm (2'9")	175 l (6.2 ft ³)	1000112219	50Z3	
	175 l (6.2 ft ³)	1000112224	50Z3	For quickhitch
Bucket B = 340 mm (1'1")	74 l (2.6 ft ³)	1000112225	6003	
	74 l (2.6 ft ³)	1000112229	6003	For quickhitch
Bucket B = 400 mm (1'4")	92 l (3.2 ft ³)	1000112226	6003	
	92 l (3.2 ft ³)	1000112231	6003	For quickhitch
Bucket B = 500 mm (1'8")	120 l (4.2 ft ³)	1000109796	6003	
	120 l (4.2 ft ³)	1000112232	6003	For quickhitch



Description of attachment	Capacity	Item no.:	Excavator	Remarks
Bucket B = 650 mm (2'2")	165 l (5.8 ft ³)	1000112227	6003	
	165 l (5.8 ft ³)	1000112233	6003	For quickhitch
Bucket B = 850 mm (2'9")	225 l (7.9 ft ³)	1000112228	6003	
	225 l (7.9 ft ³)	1000112234	6003	For quickhitch
Ditch cleaning bucket B = 1200 mm (3'11")	205 l (7.2 ft ³)	1000096589	50Z3	
	205 l (7.2 ft ³)	1000096589	6003	
Ditch cleaning bucket B = 1400 mm (4'7")	238 l (8.4 ft ³)	1000096590	50Z3	
	238 l (8.4 ft ³)	1000096601	50Z3	For quickhitch
Ditch cleaning bucket B = 1400 mm (4'7")	238 l (8.4 ft ³)	1000096590	6003	
	238 l (8.4 ft ³)	1000096601	6003	For quickhitch
Offset bucket B = 1200 mm (3'11")	150 l (5.3 ft ³)	1000096583	6003	
	150 l (5.3 ft ³)	1000096584	6003	For quickhitch
Offset bucket B = 1400 mm (4'7")	180 l (6.4 ft ³)	1000096584	6003	
	180 l (6.4 ft ³)	1000017255	6003	For quickhitch

1.5 Operator qualifications

Requirements to be met by the operator

Earth moving machines may be driven and serviced only by persons who meet the following requirements:

- 18 years or older
- Physically and mentally suited for this work
- Persons have been instructed in driving and servicing the earth moving machine and have proven their qualifications to the contractor
- Persons are expected to perform work reliably.
- They have been appointed by the contractor for driving and servicing the earth moving machine.
- Get informed on and follow the legal regulations of your country.



1.6 EC declaration of conformity version 50Z3 up to serial number AH00578

**WACKER
NEUSON****EC Declaration of Conformity**

according to EC Directive 98/37/EC, 2000/14/EC Appendix 6

Wacker Neuson Linz GmbH
Haidfeldstr. 37
A-4060 Linz-Leonding

declare, under their own responsibility, that the product

Product name Wacker Neuson track excavator 50Z3
 Model 50Z3
 Version 50Z3
 Serial no. - - - - -

to which this declaration refers, corresponds to the pertinent fundamental requirements regarding safety and health of

EC Directive 98/37/EC,
 and the requirements of further pertinent EC Directives and standards.

ISO 3471 and EN 13510	Tested		Administrative unit reported according to Appendix 6
2000/14/EC	information Noise level	dBA	TUV München (Munich/Germany Industrial Supervisory Board) Westendstr. 199 D-80686 Munich
	Measured value		
	Guaranteed value	96	

The following standards and/or technical specifications have been used for the proper application of the requirements regarding safety and health stated in the EC Directives:

EN 474-1, EN 474-3, EN292-1, EN 292-2, ISO 3471, EN 13510;

Place of storage of technical documentation:

Wacker Neuson Linz GmbH
 Department: R & D
 Haidfeldstr. 37
 A-4060 Linz-Leonding

Linz-Leonding, (date) _ _ . _ _ . _ _ _ _

Josef Erlinger
 Wacker Neuson Linz GmbH

**1.7 EC declaration of conformity version 50Z3 from serial number AH00579****WACKER
NEUSON****EC Declaration of Conformity**

according to EC Directive 98/37/EC, 2000/14/EC Appendix 6

**Wacker Neuson Linz GmbH
Haidfeldstr. 37
A-4060 Linz-Leonding**

declare, under their own responsibility, that the product

Product name Wacker Neuson track excavator 50Z3
Model 50Z3
Version 50Z3
Serial no. - - - - -

to which this declaration refers, corresponds to the pertinent fundamental requirements regarding safety and health of

EC Directive 98/37/EC,
and the requirements of further pertinent EC Directives and standards.

ISO 3471 and EN 13510	Tested		Administrative unit reported according to Appendix 6
2000/14/EC	information Noise level	dBA	TUV München (Munich/Germany Industrial Supervisory Board) Westendstr. 199 D-80686 Munich
	Measured value		
	Guaranteed value		

The following standards and/or technical specifications have been used for the proper application of the requirements regarding safety and health stated in the EC Directives:

EN 474-1, EN 474-3, EN292-1, EN 292-2, ISO 3471, EN 13510;

Place of storage of technical documentation:

Wacker Neuson Linz GmbH
Department: R & D
Haidfeldstr. 37
A-4060 Linz-Leonding

Linz-Leonding, (date) _ _ . _ _ . _ _ _

Josef Erlinger
Wacker Neuson Linz GmbH



1.8 EC declaration of conformity version 6003 up to serial number AH00578

**WACKER
NEUSON****EC Declaration of Conformity**

according to EC Directive 98/37/EC, 2000/14/EC Appendix 6

Wacker Neuson Linz GmbH
Haidfeldstr. 37
A-4060 Linz-Leonding

declare, under their own responsibility, that the product

Product name Wacker Neuson track excavator 6003
 Model 6003
 Version 6003
 Serial no. - - - - -

to which this declaration refers, corresponds to the pertinent fundamental requirements regarding safety and health of

EC Directive 98/37/EC,
 and the requirements of further pertinent EC Directives and standards.

ISO 3471 and EN 13510	Tested		Administrative unit reported according to Appendix 6
2000/14/EC	information Noise level	dBA	TUV München (Munich/Germany Industrial Supervisory Board) Westendstr. 199 D-80686 Munich
	Measured value	98.4	
	Guaranteed value	98	

The following standards and/or technical specifications have been used for the proper application of the requirements regarding safety and health stated in the EC Directives:

EN 474-1, EN 474-3, EN292-1, EN 292-2, ISO 3471, EN 13510;

Place of storage of technical documentation:

Wacker Neuson Linz GmbH
 Department: R & D
 Haidfeldstr. 37
 A-4060 Linz-Leonding

Linz-Leonding, (date) _ _ . _ _ . _ _ _ _

Josef Erlinger
 Wacker Neuson Linz GmbH

**1.9 EC declaration of conformity version 6003 from serial number AH00579****WACKER
NEUSON****EC Declaration of Conformity**

according to EC Directive 98/37/EC, 2000/14/EC Appendix 6

**Wacker Neuson Linz GmbH
Haidfeldstr. 37
A-4060 Linz-Leonding**

declare, under their own responsibility, that the product

Product name Wacker Neuson track excavator 6003
Model 6003
Version 6003
Serial no. - - - - -

to which this declaration refers, corresponds to the pertinent fundamental requirements regarding safety and health of

EC Directive 98/37/EC,
and the requirements of further pertinent EC Directives and standards.

ISO 3471 and EN 13510	Tested		Administrative unit reported according to Appendix 6
2000/14/EC	information Noise level	dBA	TUV München (Munich/Germany Industrial Supervisory Board) Westendstr. 199 D-80686 Munich
	Measured value		
	Guaranteed value		

The following standards and/or technical specifications have been used for the proper application of the requirements regarding safety and health stated in the EC Directives:

EN 474-1, EN 474-3, EN292-1, EN 292-2, ISO 3471, EN 13510;

Place of storage of technical documentation:

Wacker Neuson Linz GmbH
Department: R & D
Haidfeldstr. 37
A-4060 Linz-Leonding

Linz-Leonding, (date) _ _ . _ _ . _ _ _ _

Josef Erlinger
Wacker Neuson Linz GmbH

1.10 Type labels and component numbers



Fig. 1: Type label: location

[illegible]

Fig. 2: Type label

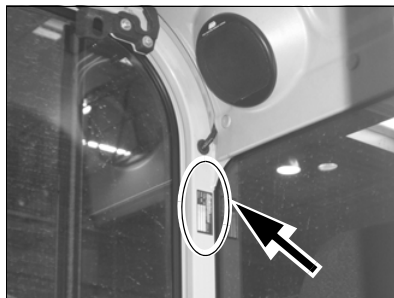


Fig. 3: Cab type label

Serial number

The serial number is stamped on the machine chassis. It is also located on the Product Identification Number plate riveted to the front left chassis of the machine.

Type label information

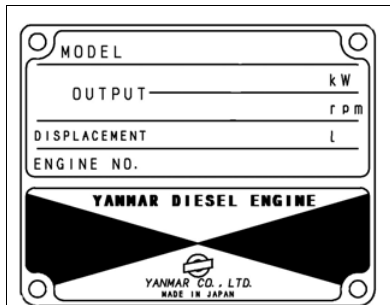
Example: 50Z3

Model:	50Z3
Year:	2007
PIN:	AH00579
Power, SAE:	28.1 kW (37.7 hp)
Mass:	4800 kg (10582 lbs)
Load:	-----
Max. gross mass:	-----
Max. axle load:	-----

Other information – see [chapter 6 Specifications](#) on page 6-1

Cab certification number

The type label (arrow) is located in the cab, on the rear right chassis member.



Engine identification number

The type label (arrow) is located on the cylinder-head cover (engine).

Example: Yanmar 46557

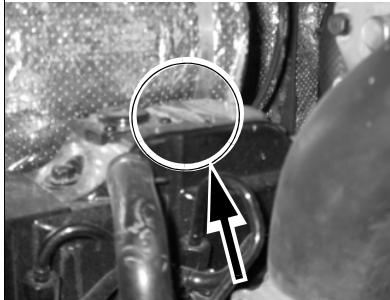


Fig. 4: Diesel engine type label up to serial number AH00578

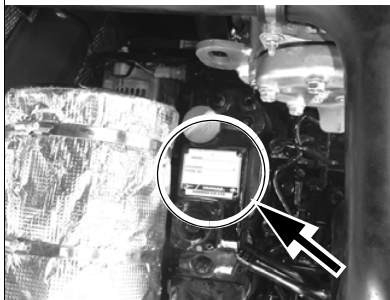
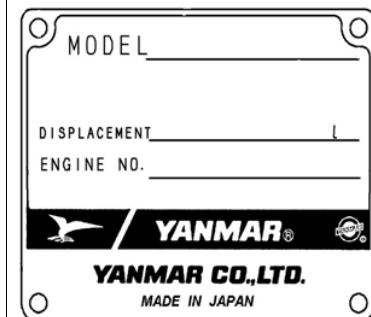
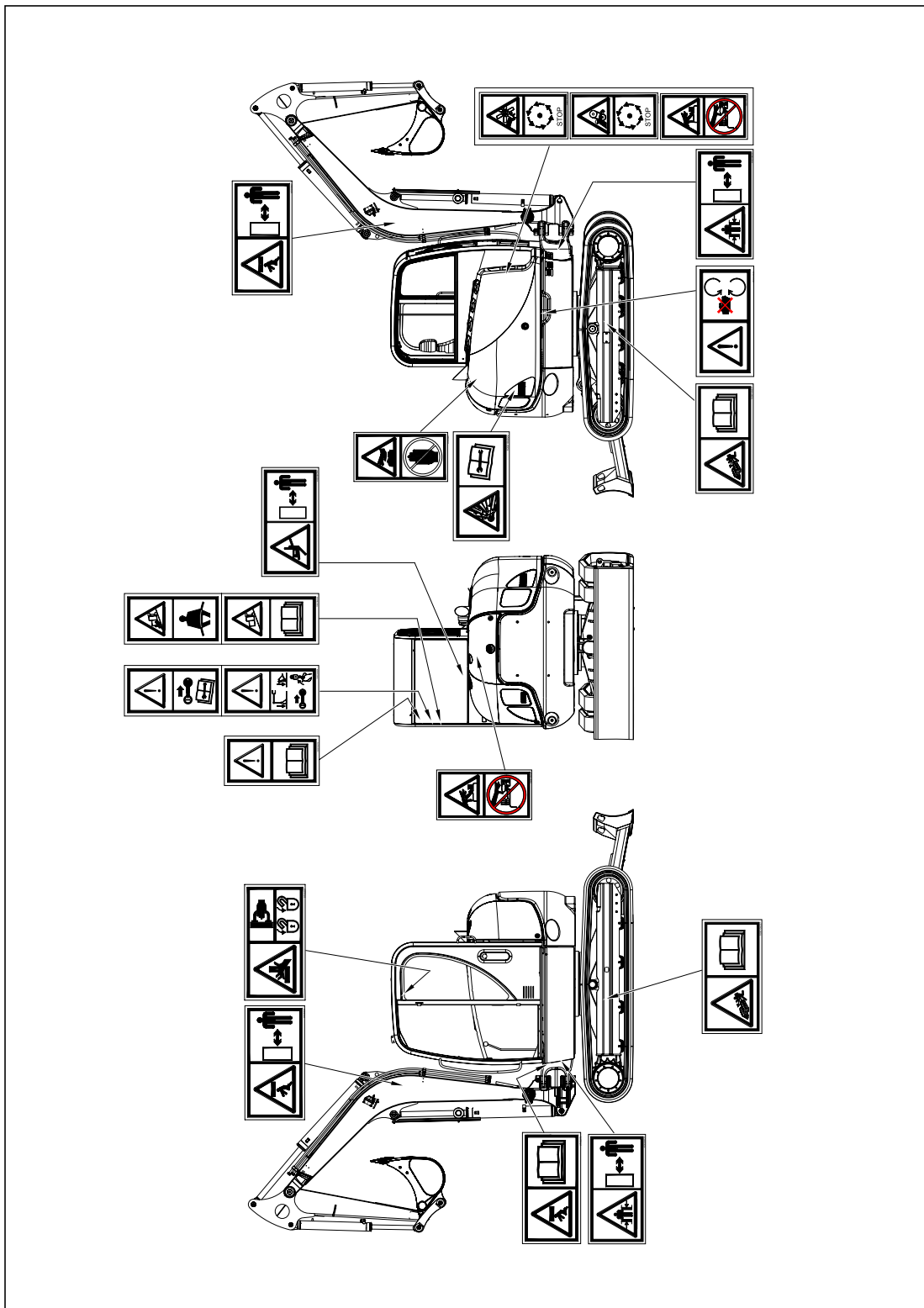


Fig. 4: Diesel engine type label from serial number AH00579

1.11 Label overview



1.12 Symbols

The following symbols are displayed on the machine to provide pictorial information to the user. The information and explanations are provided to avoid misinterpretation by the user. The symbols have been chosen to provide important information to those involved with operating, adjusting, maintaining, and repairing this machine.



Fig. 5: Eye hook label

Description

Locates the lifting points for hoisting the excavator with lifting devices (slings, chains, or cables).

Location

On either side of the stabilizer blade, and on either side of the boom near the cylinder end of the stick hydraulic cylinder mounting.



Fig. 6: Label for points used for strapping down the machine

Description

Tie down points.

Location points designated for tie down of the machine during transport to prevent movement during transport.

Location

On either side of the stabilizer blade, and on either side of the undercarriage.

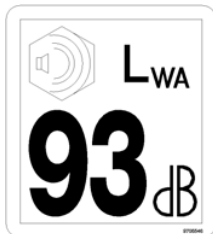


Fig. 7: Noise level label

Description

Noise levels produced by the machine.

L_{WA} = sound power level

Location

On the rear window of cabine.

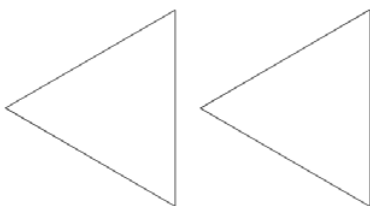


Fig. 8: Direction arrows

Description

This label shows the **forward** driving direction.

Location

On each undercarriage at the idler end of the structure.

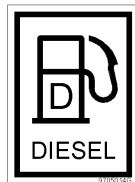


Fig. 9: Diesel

Description

Fill location for diesel fuel only.

Location

On the fuel tank filler neck.

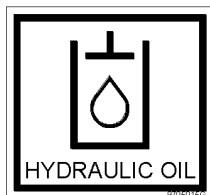


Fig. 10: Hydraulic oil

Description

Hydraulic oil reservoir. Use hydraulic fluid only.

Location

On the tank cover.

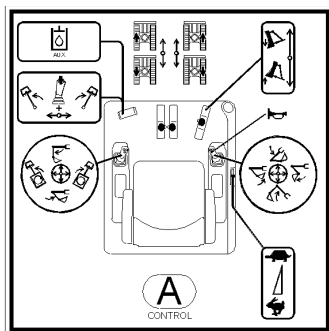


Fig. 11: Functions of the joysticks

Description

Explains the functions of the joysticks (control pattern "A") and of other controls. If the machine is fitted with the "selection valve" check before starting the machine which control pattern you have chosen!

Location

On the cabin roof.

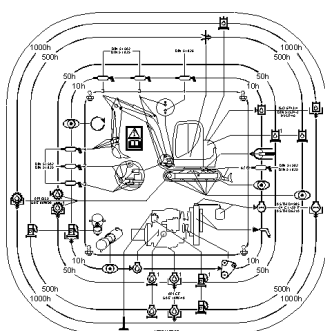


Fig. 12: Service intervals

Description

Shows the main service intervals. For complete list of service interval see the maintenance section of this Operator's Manual.

Location

On the left window of cabin.

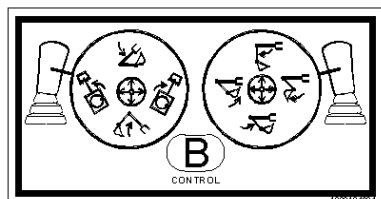
Options:

Fig. 13: Control pattern B

Description

Explains the functions of the joysticks (control pattern "B"). Check before starting the machine which control pattern you have chosen!

Location

On the cabin roof.

Safety Labels

Always follow the instructions on the safety labels!

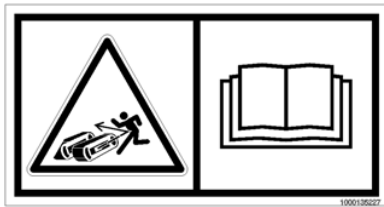


Fig. 14: Tighten tracks

Description

The label means the following:

- Potential high pressure grease discharge from the track tension adjustment fitting.
- Always read the operator's manual before relaising or tightening the tracks to avoid potential injury from ejected grease.

Location

On the undercarriage near the opening or relaising to insert the grease fitting.

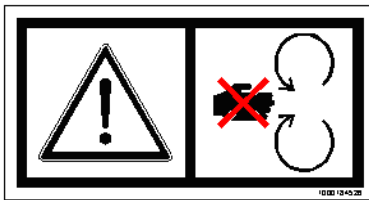


Fig. 15: Prohibitory label

Description

Attention! Stop the engine before opening the safety devices (like engine hood, fan guard,...)

Location

On the chassis near handle engine cover.



Fig. 16: Rotating V-belt

Description

This safety label warns of the following hazards:

Cutting hazard. Cooling fan can cut when rotating. Stop engine before working on the engine or cooling system.

Entanglement hazard. You can be pinched or entangled in the engine V-belt when the engine is running. Stop engine before working on the engine.

Hot surface and burn hazards. Do not touch.

Contents are under pressure. Do not remove cap.

Location

In the engine compartment.



Fig. 17: Hot surfaces

Description

Hot surface! Do not touch.

Location

Engine compartment near muffler system.



Fig. 18: Hydraulic oil tank under pressure

Description

The tank is hot and under pressure!

- Allow the fluids to cool down!

Carefully and slowly open the cover only after the cooler has cooled fluids down, to allow the pressure to escape.

Location

On the top of the tank cover.

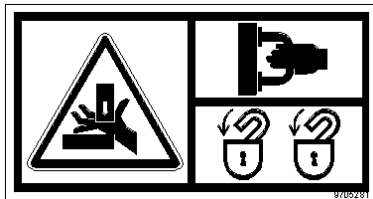


Fig. 19: Front window

Description

Pinch point hazard. Always use the handles to open and close the front window.

Always fasten the front window with both locks.

Location

On the front window.



Fig. 20: Read the operator's manual

Description

Attention! Read and understand the Operator's Manual before starting, operating, adjusting, maintaining, or repairing the machine.

Location

On the b-pillar in the cabin.

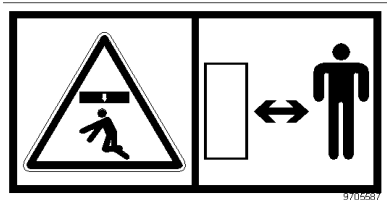


Fig. 21: Keep distance 1

Description

Crushing hazard. Bystanders must stay clear of the machine when it is being operated.

Location

On either side of the boom structure.

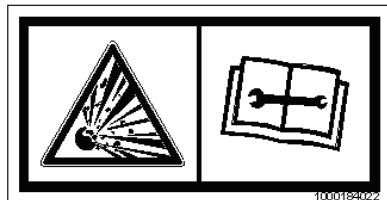


Fig. 22: Under pressure

Description

Accumulator is under high pressure. Always read Service Manual before maintaining or repairing the machine.

Location

On the accumulator.

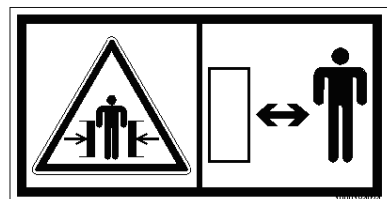


Fig. 23: Keep distance 2

Description

Crushing hazard. Bystanders must stay clear of the machine when it is being operated.

Location

On the left and right side of the boom swing console on the chassis.

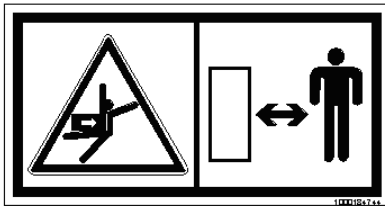


Fig. 24: Keep distance 3

Description

Collision hazard. Bystanders must stay clear of the machine when it is operated.

Location

On the rear window.

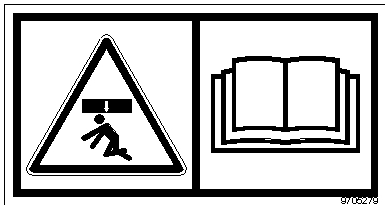


Fig. 25: Cab tilting

Description

Crushing hazard. Read and understand the instructions in the Operator's Manual and before tilting the cabin.

Location

On the left front of chassis.

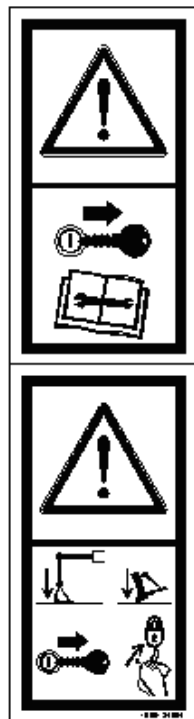


Fig. 26: Read manual before maintaining or repairing

Description

Attention! Remove starter key and read the Service Manual before servicing the machine.

Attention! Before leaving the machine, lower all equipment to ground, remove the key and lock the controls.

Location

On the b-pillar in the cabin.

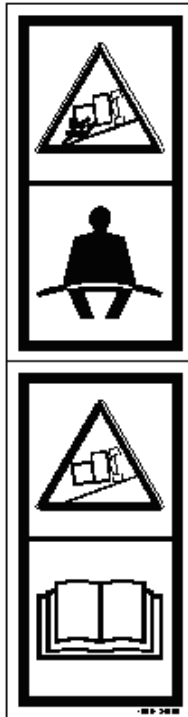


Fig. 27: Operator's seat and fasten seat

Description

Risk of being thrown from the machine. Operate the machine only from the operator's seat.

Fasten seat belt when operating the machine.

Operate within stability limits of machine to avoid tipping over.

Read the Operator's Manual.

Location

On the b-pillar in the cabin.

1.13 Fire extinguisher



Fig. 28: Position of fire extinguisher

The fire extinguisher is not supplied with the machine.

☞ *Retrofitting a fire extinguisher according to NFPA must be performed by an authorized Wacker Neuson service center.*

☞ *Location:*

➡ In the cab, on the left in driving direction behind the seat (see [Fig. 28](#)).

☞ *Installation:*

- Mount the fire extinguisher on the cab profile according to the manufacturer's instructions.
- The maximum hole diameter is 6mm (0.24")
- The maximum number of holes is two.

**Important!**

Check the fire extinguisher at regular intervals, also make sure it is safely mounted.